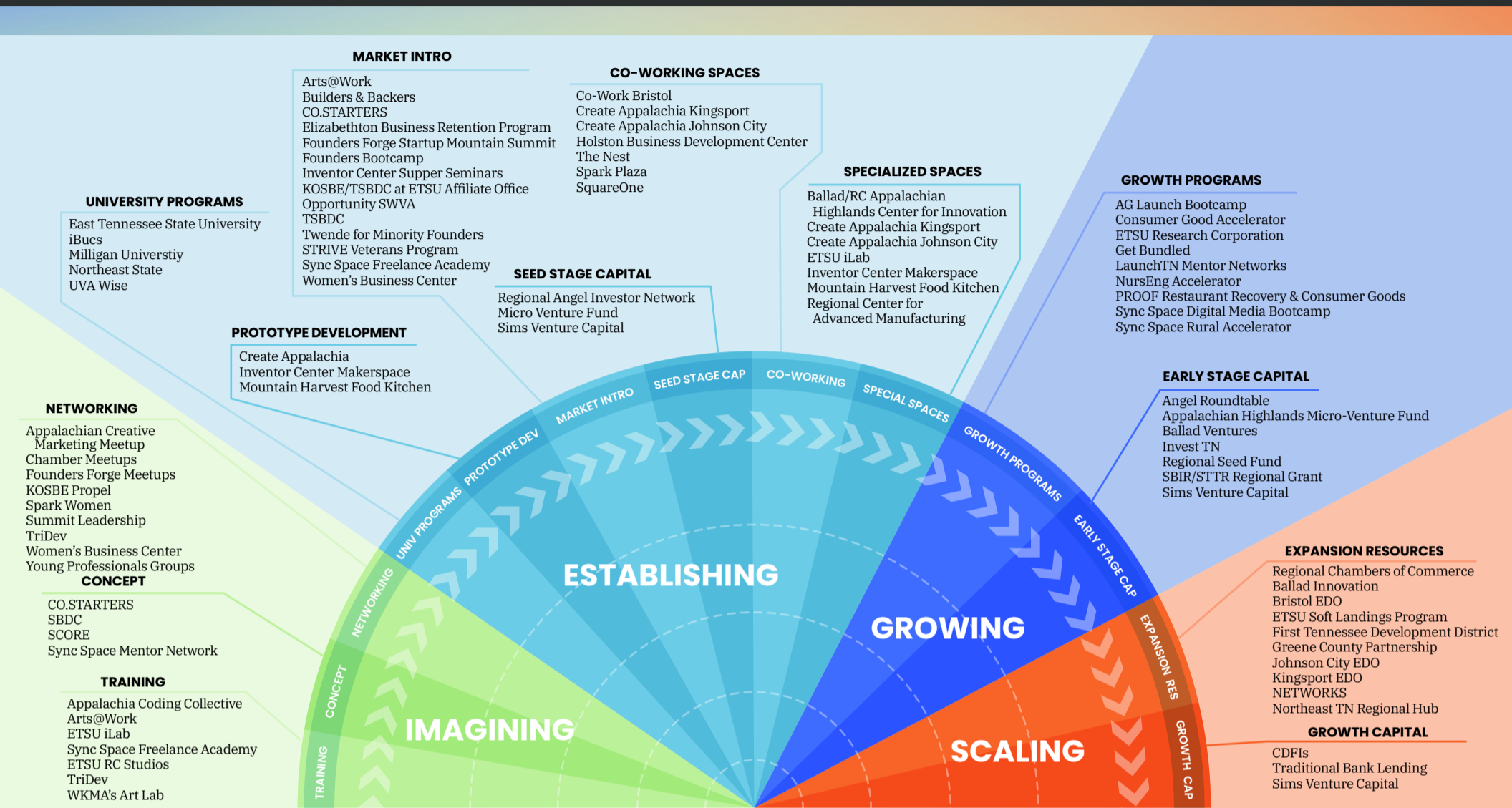


# Appalachian Highlands ENTREPRENEURIAL ECOSYSTEM MAP



## IMAGINING

### NETWORKING

Providing networking opportunities for entrepreneurs, students, inventors, creators, remote and a digital workers through events, meetups and spaces.

### CONCEPT

People in the concept phase are looking for ways to brainstorm, evaluate, and refine their business idea and draft a roadmap to begin their business journey.

### TRAINING

Programs, lunch-and-learns and demonstrations to provide free or low-cost access to training for entrepreneurs and creators to advance their skillsets.

## ESTABLISHING

### UNIVERSITY PROGRAMS

Programs that have direct involvement with higher education partners including on-campus bootcamps, meetups, and research programs and internship opportunities for startups.

### PROTOTYPE DEVELOPMENT

Access to equipment and professionals with experience building digital or physical prototypes of business ideas including app design, 3D printing, food experimentation and more.

### MARKET INTRO

Introduction to partners that mentor, connect and support an entrepreneur as they journey from idea to startup and seek to understand where they fit in the market and who are their customers.

### SEED STAGE CAPITAL

Seed capital is initial funding to start a business and fund the proof of concept and viability of the startup. Friends and Family, Angel capital, micro-venture capital and small grant or loan programs typical support this stage.

### CO-WORKING SPACES

Co-working spaces offer discounted access to shared services such as high-speed internet, office equipment and meeting rooms. They also are community spaces to help promote entrepreneurial culture and sharing of experiences.

### SPECIALIZED SPACES

Facilities which have specialized equipment or unique assets needed for entrepreneurs. These spaces typically have a focus on high priced equipment or niche services supported by outside grants and partnerships.

## GROWING

### EARLY STAGE CAPITAL

Capital that supports the expansion of a startup's team, equipment needs or even initial manufacturing. Partners who participate in early-stage investing may include small angel funds and venture funds.

### GROWTH PROGRAMS

Accelerators and professional mentor networks become exponentially valuable for startup companies that have gained traction through initial programs, training and support.

## SCALING

### EXPANSION RESOURCES

As a startup gains traction and seeks to become rooted in the community, the level connectivity and resources become important to ensure the company can remain and grow in the ecosystem.

### GROWTH CAPITAL

Access to capital is extremely important for companies as they grow their workforce, successfully meet the demands of their customers and seek to advance to long-term sustainability.

## DIRECTORY

AGLaunch	aglaunch.com
Angel Round Table	theangelroundtable.com
Appalachian Creative Marketing Meetup	syncspace.org/acmm
Ballad Ventures	balladhealth.org/ballad-ventures
Believe in Bristol	believeinbristol.org
Bristol Chamber of Commerce	bristolchamber.com
Create Appalachia	createappalachia.org
East Tennessee State University	etsu.edu/strive
Elizabethton Chamber of Commerce	elizabethtonchamber.com
ETSU Research Corporation	etsuresearchcorporation.org
ETSU RC Studios	etsuresearchcorporation.org
Founders Forge	myfoundersforge.com
Get Bundled	launchtn.org/bundledinitiative
Greeneville County Partnership	greenecountypartnership.com
Hawkins County Chamber of Commerce	rogersvilletnchamber.com
Holston Business Development Center	holstonbusiness.hbdc.org
Innovation Lab	etsu.edu/ilab
Inventor Center	theinventorcenter.org
Johnson City Chamber of Commerce	johnsoncitytnchamber.com
Kingsport Chamber of Commerce	kingsportchamber.org
KOSBE/TSBDC at ETSU Affiliate Office	kosbe.org
LaunchTN	launchtn.org
Milligan University	milligan.edu
Mountain Harvest Food Kitchen	unicoin.net/mhk-incubator
Networks	networkstn.com
Northeast TN Regional Hub	northeasttn.com
Northeast State Community College	northeaststate.edu
Opportunity SWVA	opportunityswva.org
PROOF Incubator	proofincubator.com
RCAM	manufacturingfuture.net
STRIVE Veterans Program	etsu.edu/cbat/strive.php
Summit Leadership	summitlife.org
Sync Space	syncspace.org
The Nest	facebook.com/thenestswva
TriDev	tricitities.dev
TSBDC	tsbdc.org
Sims Venture Capital	simsventurecapital.com
Spark Plaza	sparkplaza.com
SquareOne	squareoneerwin.com
WKMA's Art Lab	williamkingmuseum.org
Women's Business Center	kosbe.org
UVA Wise	uvawise.edu
Young Professionals Groups	ypjohnsoncity.com